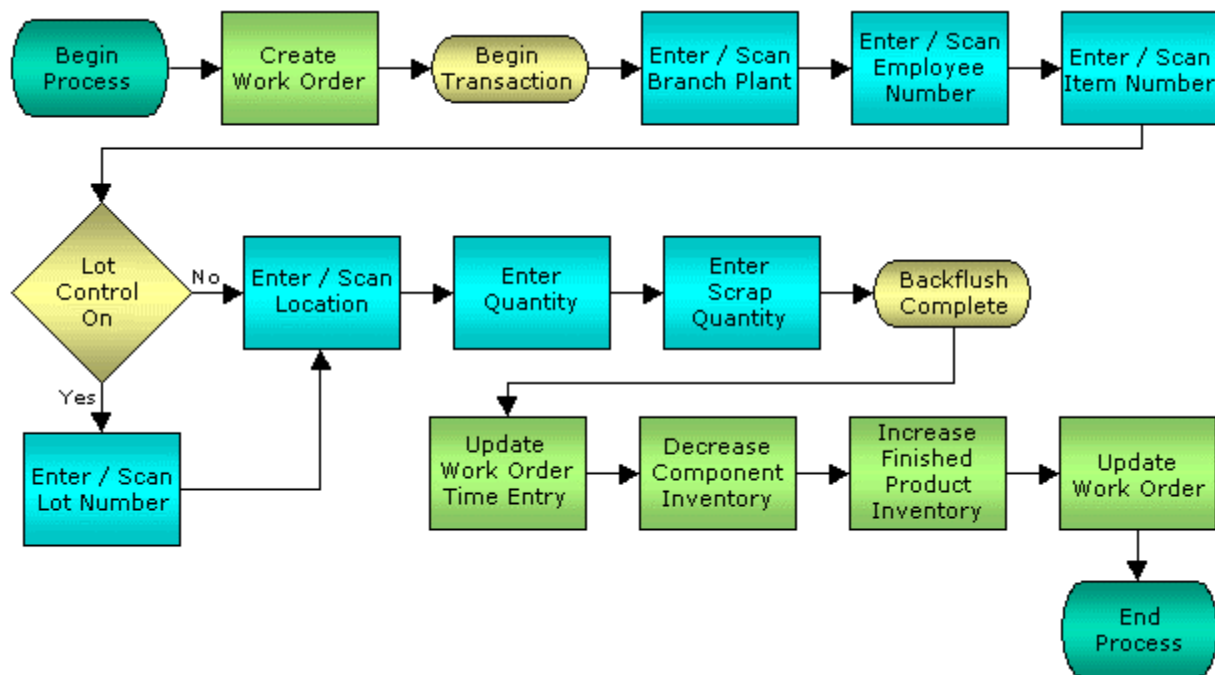


# Work Order Rate Completions



© The DataMAX Software Group Inc  
5049 Robert J Mathews Parkway, Suite 100  
El Dorado Hills, CA 95762  
(916) 939-4065

JD Edwards ENTERPRISEONE® are registered trademarks of Oracle® and protected by national and international copyright laws.

## License Agreement

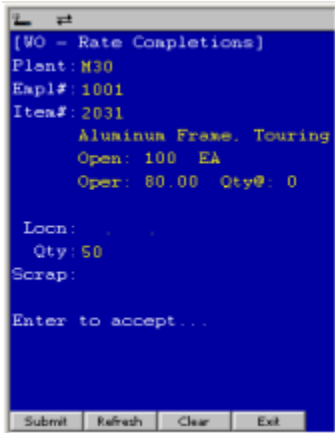
All information contained in this document is **Copyright 2006, the DataMAX Software Group, Inc., All Rights Are Reserved by DataMAX.** This document may not be published, nor used without the prior written consent of DataMAX. **Use of the RFGen Software 'Open Source' code is at all times subject to the DataMAX Open Source Licensing Agreement,** which must be accepted at the time the source code is installed on your computer system. For your convenience, a text copy of the Open Source Licensing Agreement is also loaded (and may be printed from) your RFGen based system.

Requirements: RFGen Version 3.2.0.25 or later  
RFGen JDEdwards Integration Suite

## TABLE OF CONTENTS

<b>FWORC0100 – WORK ORDER RATE COMPLETIONS .....</b>	<b>2</b>
✓ VALIDATIONS .....	2
✓ EDITS .....	2
⇨ FUNCTION KEYS .....	2
<b>ENTERPRISEONE PROGRAMS - REFERENCE.....</b>	<b>3</b>
ENTERPRISEONE WORK ORDER RATE COMPLETIONS: P31123.....	3
<b>BASIC TEST SCRIPT .....</b>	<b>3</b>
<b>TEST SCRIPT DESCRIPTION: WO RATE COMPLETIONS (P31123).....</b>	<b>4</b>
RFGEN INPUT REQUIREMENTS.....	4
JD EDWARDS PROCESSING OPTION SETTINGS.....	4
EXECUTION PROCEDURES.....	5
OVERALL TEST CASE RESULTS .....	7

## FWORC0100 – Work Order Rate Completions



This transaction allows the completion of parts against a particular work order in EnterpriseOne. At Work Order Rate Completions, the Work Order is updated, raw material is issued, time entry is processed and finished goods inventory is increased.

The following conditions apply to the RFGGen implementation for the Rate Completions transaction within the EnterpriseOne environment.

Note: any of these parameters may be easily adjusted to meet the unique requirements of your company.

### ✓ Validations

Prompt	Table	Field
Plant	F41001	CIMCU
Employee Number	F0101	ABAN8
Item Number	F4801	WALITM
Location	F3111	WMLOCN
Quantity	F4801	WAUORG

### ✓ Edits

Condition	Table
Default Branch Plant	F40095
Quantity entered <=0	NA

### ⇧ Function Keys

Key	Function
F1	Search Data for Current Field
F2	Refresh the Current Screen Display
F3	
F4	Exits Transaction

## EnterpriseOne Programs - Reference

Application Name(s)	Code	Table
Work Order Rate Completions	P31123	F3112

## EnterpriseOne Work Order Rate Completions: P31123

Employee Number	Equipment Number	Quantity Completed	Quantity Scrapped	U/M	Op St	Pay Point Status	Pay Point Code	Description	Standard Quantity	Std U/M	Quantity at Operation	Tot Con
1001				EA	20	P	0	Cut to length	100	EA	50	
1001				EA	20	P	0	Mill ends	100	EA		

## Basic Test Script

1. Record hours against operations for a certain employee.
2. Verify hours recorded have populated the correct tables in EnterpriseOne.

## Test Script Description: WO Rate Completions (P31123)

### RFGen Input Requirements

Before you begin testing, ensure, for the combination of branch/plant(s) and item(s) you will be testing, that the following is setup in EnterpriseOne or PeopleSoft World.

- a. Employee Number/Labor Rate
- b. Item/Rate
- c. Branch/Plant
- d. Shift

### JD Edwards Processing Option Settings

Enter the Processing Option values, which correspond, to the version you selected for testing.

JDE Version: ZJDE0001\_\_\_\_\_

Tab	Processing Option Description	Value
Defaults	a. Employee Number b. Shift Code	
Edits	a. Work Order Status Limit	
Versions	a. Hours and Quantities (P311221) b. Work Order Issues (P31113) c. Work Order Completions (P31114)	

## Execution Procedures

ID	Test Case	Expected Result	Pass	Fail
1	Type in a valid Branch/Plant _____ Press the <b>ENTER</b> key	RFGEN will validate and accept the branch/plant entered		
2	Type in a valid Employee# _____ Press the <b>ENTER</b> key	RFGEN will validate and accept the employee number entered		
3	Type in a valid Shift _____ Press the <b>ENTER</b> key	RFGEN will validate and accept the shift entered		
4	Type in a valid Item# _____ Press the <b>ENTER</b> key	RFGEN will validate and accept the item number entered		
5	Type in a valid Locn _____ Press the <b>ENTER</b> key	RFGEN will validate and accept the location entered		
6	Type in a valid Qty _____ Press the <b>ENTER</b> key	RFGEN will validate and accept the quantity entered.		
7	Type in a valid Scrap (qty) _____ Press the <b>ENTER</b> key	RFGEN will validate and accept the scrap (qty) entered.		
8	Type in an invalid Branch/Plant _____ Press the <b>ENTER</b> key	RFGEN will validate the branch/plant entered and display an error message – the field will continue to error out until corrected		
9	Type in an invalid Employee# _____ Press the <b>ENTER</b> key	RFGEN will validate and display an error message – the field will continue to error out until corrected		
10	Type in an invalid Shift _____ Press the <b>ENTER</b> key	RFGEN will validate and display an error message – the field will continue to error out until corrected		
11	Type in an invalid Type _____ Press the <b>ENTER</b> key	RFGEN will validate and display an error message – the field will continue to error out until corrected		
12	Type in an invalid Locn _____ Press the <b>ENTER</b> key	RFGEN will validate and display an error message – the field will continue to error out until corrected		
13	Type in an invalid Qty _____ Press the <b>ENTER</b> key	RFGEN will validate and display an error message – the field will continue to error out until corrected		
14	Type in an invalid Scrap (qty) _____ Press the <b>ENTER</b> key	RFGEN will validate and display an error message – the field will continue to error out until corrected		
15	Press the “F1” key with the cursor in the branch/plant field	RFGEN will display a list of branch/plants		
16	Press the “F1” key with the cursor in the branch/plant field to select and return a branch/plant	RFGEN will display a list of branch/plants and when selected, the branch/plant will be returned		

17	Press the "F1" key with the cursor in the Employee# field	RFGEN will display a list of employee numbers		
18	Press the "F1" key with the cursor in the Employee# field to select and return an employee number	RFGEN will display a list of employee numbers and when selected, the employee number will be returned		
19	Press the "F1" key with the cursor in the Shift field	RFGEN will display a list of shift codes		
20	Press the "F1" key with the cursor in the Shift field to select and return a shift code	RFGEN will display a list of shift codes and when selected, the shift code will be returned		
21	Press the "F1" key with the cursor in the Item# field	RFGEN will display a list of item numbers		
22	Press the "F1" key with the cursor in the Item# field to select and return an item number	RFGEN will display a list of item numbers and when selected, the item number will be returned		
23	If the Employee Number processing option is activated (non-blank)	RFGEN will retrieve the employee number from the processing option		
24	If the Employee Number processing option is deactivated (blanks)	RFGEN will not default an employee number from the processing option		
25	If the Shift Code processing option is activated (non-blank)	RFGEN will retrieve the shift code from the processing option		
26	If the Shift Code processing option is deactivated (blanks)	RFGEN will not default a shift code from the processing option		
27	If the Work Order Status Limit processing option is at a valid super backflush status	RFGEN will validate the status and allow the execution of the super backflush process		
28	If the Work Order Status Limit processing option is at an invalid super backflush status	RFGEN will validate the status and not allow the execution of the super backflush process—an error message will be displayed		
29	If versions are specified for "the Hours and Quantities (P311221)"; "Work Order Issues (P31113)"; and "Work Order Completions (P31114)" processes	RFGEN will retrieve the versions specified—if left blank, version ZJDE0001 will be used		
30	At the RFGEN "Enter to Accept Prompt" the transaction is added to EnterpriseOne	Confirm the Work Order Super Backflush results		

## Overall Test Case Results

<b>Pass/Fail:</b>	
<b>Tester/Date:</b>	
<b>Re-Tester/Date:</b>	

<b>Actual Results:</b>	
------------------------	--

<b>Comments:</b>	
------------------	--