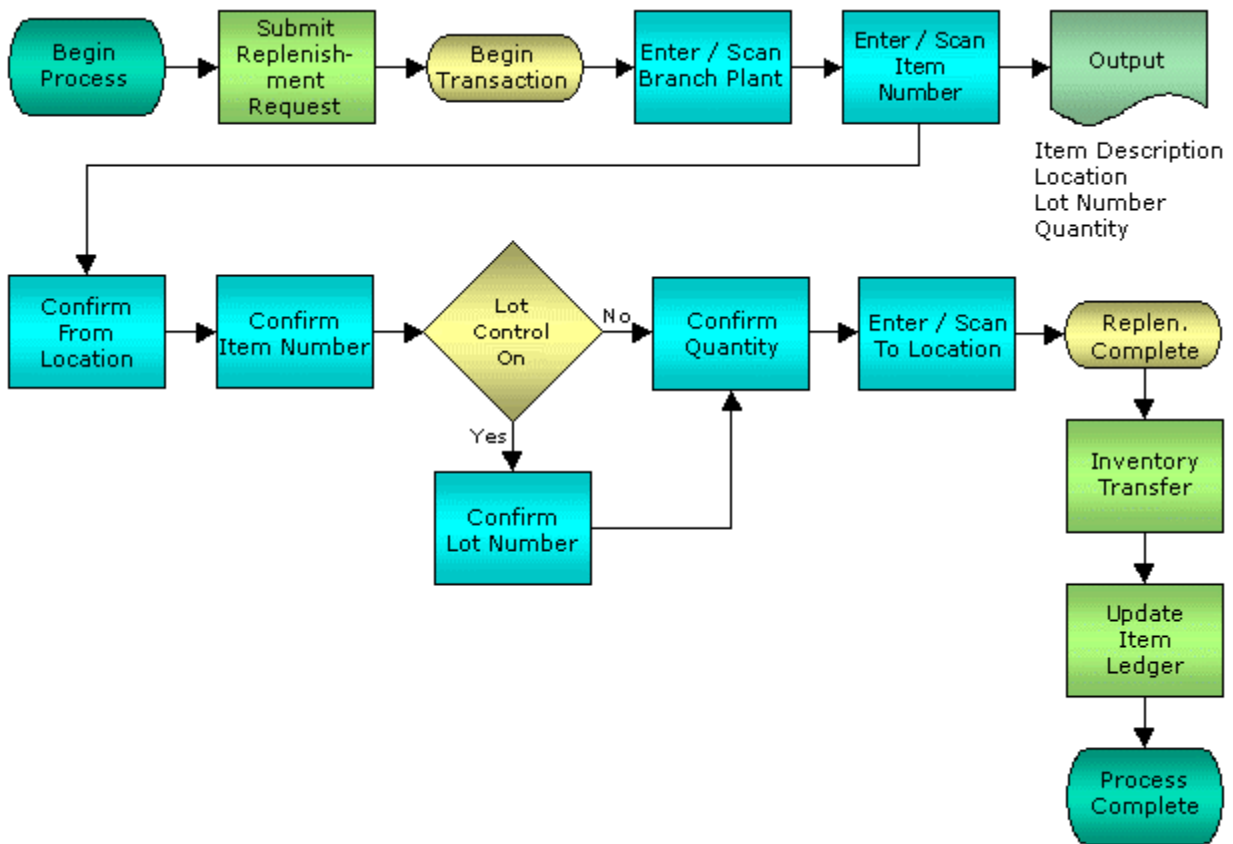


Warehouse Replenishment by Item



© The DataMAX Software Group Inc
5049 Robert J Mathews Parkway, Suite 100
El Dorado Hills, CA 95762
(916) 939-4065

JD Edwards ENTERPRISEONE® are registered trademarks of Oracle® and protected by national and international copyright laws.

License Agreement

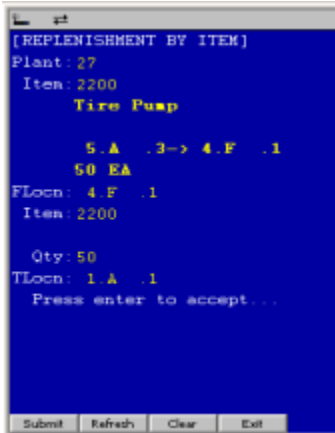
All information contained in this document is **Copyright 2006, the DataMAX Software Group, Inc., All Rights Are Reserved by DataMAX.** This document may not be published, nor used without the prior written consent of DataMAX. **Use of the RFGen Software 'Open Source' code is at all times subject to the DataMAX Open Source Licensing Agreement,** which must be accepted at the time the source code is installed on your computer system. For your convenience, a text copy of the Open Source Licensing Agreement is also loaded (and may be printed from) your RFGen based system.

Requirements: RFGen Version 3.2.0.25 or later
RFGen JDEdwards Integration Suite

TABLE OF CONTENTS

FWHRIO0100 – REPLENISHMENT BY ITEM	2
✓ VALIDATIONS	2
✓ EDITS	2
⇨ FUNCTION KEYS	2
ENTERPRISEONE PROGRAMS - REFERENCE.....	3
ENTERPRISEONE CONFIRM REPLENISHMENT: P4617	3
HOW JDEDWARDS® PROCESSING OPTION AFFECTS RFGEN.....	4
AFFECTED RFGEN FORMS AND TRANSACTION MACROS.....	4
SETUP AN RFGEN MENU	4
PROCESSING OPTIONS: P4617 WAREHOUSE CONFIRMATIONS.....	5
TEST SCRIPT DESCRIPTION: WH REPLENISHMENT BY ITEM (P4617).....	6
RFGEN INPUT REQUIREMENTS.....	6
JD EDWARDS PROCESSING OPTION SETTINGS.....	6
EXECUTION PROCEDURES.....	7
OVERALL TEST CASE RESULTS	9

FWHRI00100 – Replenishment by Item



This transaction confirms inventory replenishment transactions based on the suggestions that have been created in your EnterpriseOne warehouse suggestion file. The transaction will move inventory from one location to another location within the warehouse.

The following conditions apply to the RFGGen implementation for the Replenishment by Item within the EnterpriseOne environment.

Note: any of these parameters may be easily adjusted to meet the unique requirements of your company.

✓ Validations

Prompt	Table	Field
Branch Plant	F4611	R2MCU
Sales Order	F4611	R2LITM
Item Number	F4611	R2LLITM
From Location	F4611	R2FLOC
To Location	F4611	R2TLOC

✓ Edits

Condition	Table
Default Branch Plant	F40095

⇐ Function Keys

Key	Function
F1	Search Data for Current Field
F2	Refresh the Current Screen Display
F3	
F4	Exits Transaction

EnterpriseOne Programs - Reference

Application Name(s)	Code	Table
Item Ledger	P4617	F4611

EnterpriseOne Confirm Replenishment: P4617

Find Can... New... Proc... Dis... Ago Links ▼ Proce... OLE ... Internet

Branch/Plant

Task Number

Phase

Order Number

Status

Item Number Tire Pump

Task	Trip	Item Number	From Location	To Location	Quantity	UM	Dual Quantity	Dual UOM	Branch/Plant
68	1.000	2200	5.A .3	4.F .1	50	EA	50	EA	27

How JDEdwards® Processing Option affects RFGen

This documentation explains which of the JDE Processing Options are used by RFGen and how the red highlighted Proc.Options effect the RFGen script.

Affected RFGen Forms and Transaction Macros

Description	Form name	Transaction Macro Name
Put Away by PO	FWHPP0100	TWHPC0100
Put Away by Item	FWHPI0100	TWHPC0100
Replenishment	FWHRI0100	TWHPC0100
Pick by Item	FWHCI0100	TWHPC0100
Pick by SO	FWHCS0100	TWHPC0100

Setup an RFGen Menu

To implement an RFGen Form using JDE Processing Options in an RFGen Menu the JDE Version needs to be specified.

Enter the Form name, followed by a Space. Enter “-Vers=” and the JDE Version.

Form/Menu	Description to Display
FWHPI0100 -Vers=ZJDE0001	Put Away by Item

Processing Options: P4617 Warehouse Confirmations

----- <-- Display -->

0001 1 1> Program Mode --> [1]

RFGen uses this value to filter on Warehouse Type (R2TYFL)

0002 1 2> Phase Control Code --> [2]

RFGen uses this value to filter on Phase (R2PHAS)

0003 1 3> Default Suggestion Status --> [340]

RFGen uses to filter on next Status (R2PSTB). If empty RFGen defaults to 340.

0004 1 4> Shipping Location --> [1]

If "1" RFGen allows to overwrite the Location.

----- <-- Prompts -->

0005 2 1> Location Verification --> [1]

0006 2 2> Auto Inquire --> []

----- <-- Move Tags -->

0007 3 1> Move Tag --> []

0008 3 2> Bar Code --> []

0009 3 3> Unit of Measure --> []

0010 3 4> Item/Location Quantity to Be Printed on --> []

0011 3 5> Enter the number of Duplicate Copies to --> []

0012 3 6> DREAM Writer version of the move tags to --> [XJDE0001]

Specified version is passed over to the related Business Function.

----- <-- Picking -->

0013 4 1> Override Next Status for Sales Order Lin --> [0]

0014 4 2> Override Next Status for Sales Order Lin --> []

0015 4 3> Warning/Error Display for Ship Ascending --> []

0016 4 4> Version of Pack Confirmation (P4216) --> []

----- <-- Bulk Pick -->

0017 5 1> Bulk Detail Report --> []

0018 5 2> Bulk Pick Detail Report (R46210) Version --> []

----- <-- Carton Det -->

0019 6 1> Carton Detail Information --> []

0020 6 2> Version of Carton Reorganization (P4620) --> []

Test Script Description: WH Replenishment by Item (P4617)

RFGen Input Requirements

Before you begin testing, ensure, for the combination of branch/plant(s) and item(s) you will be testing, that the following is setup in EnterpriseOne or PeopleSoft World.

- a. Branch/Plant
- b. Sales Order
- c. Item Number
- d. Location

JD Edwards Processing Option Settings

Enter the Processing Option values, which correspond, to the version you selected for testing.

JDE Version: ZJDE0001_____

Tab	Processing Option Description	Value
Display	<ol style="list-style-type: none">a. Program Modeb. Phase Control Codec. Default Suggestion Statusd. Shipping Location	
Move Tags	<ol style="list-style-type: none">a. DREAM Writer version of the move tags to be used for the printer overrides	

Execution Procedures

ID	Test Case	Expected Result	Pass	Fail
1	Type in a valid Branch/Plant _____ Press the ENTER key	RFGEN will validate and accept the branch/plant entered		
2	Type in a valid Item# _____ Press the ENTER key	RFGEN will validate and accept the item entered; and display the item description, suggested from/to locations, and replenishment quantity		
3	For confirmation, type in a valid FLocn ____ Press the ENTER key	RFGEN will validate and accept the 'from' location entered		
4	For confirmation, type in a valid Item# _____ Press the ENTER key	RFGEN will validate and accept the item entered		
5	For confirmation, type in a valid Qty _____ Press the ENTER key	RFGEN will validate and accept the quantity entered		
6	For confirmation, type in a valid TLocn ____ Press the ENTER key	RFGEN will validate and accept the 'to' location entered		
7	Type in an invalid Branch/Plant _____ Press the ENTER key	RFGEN will validate the branch/plant entered and display an error message – the field will continue to error out until corrected		
8	Type in an invalid Item# _____ Press the ENTER key	RFGEN will validate and display an error message – the field will continue to error out until corrected		
9	For confirmation, type in a invalid FLocn _____ Press the ENTER key	RFGEN will validate and display an error message – the field will continue to error out until corrected		
10	For confirmation, type in an invalid Item# _____ Press the ENTER key	RFGEN will validate and display an error message – the field will continue to error out until corrected		
11	For confirmation, type in and invalid Qty _____ Press the ENTER key	RFGEN will validate and display an error message – the field will continue to error out until corrected		
12	For confirmation, type in and invalid TLocn _____ Press the ENTER key	RFGEN will validate and display an error message – the field will continue to error out until corrected		
13	Press the “F1” key with the cursor in the branch/plant field	RFGEN will display a list of branch/plants		
14	Press the “F1” key with the cursor in the branch/plant field to select and	RFGEN will display a list of branch/plants and when selected, the branch/plant will		

	return a branch/plant	be returned		
15	Press the "F1" key with the cursor in the Item# field	RFGEN will display a list of item numbers		
16	Press the "F1" key with the cursor in the Item# field to select and return an item number	RFGEN will display a list of item numbers and when selected, the item number will be returned		
17	If the Program Mode processing option is set to "3"	RFGEN will perform replenishment confirmation		
18	If the Phase Control Code processing option is set to "2"	RFGEN will perform two-phase replenishment confirmation		
19	If the Default Suggestion Status processing option is set to "340" (suggestions printed)	RFGEN will perform replenishment confirmation		
20	If the Shipping Location processing option is set to "1"	RFGEN will allow location override during replenishment confirmation		
21	If the "DREAM Writer version of the move tags to be used for the printer overrides" processing options is activated (contains a version)	RFGEN will retrieve (from the processing option) and use the specified version during replenishment confirmation		
22	At the RFGEN "Enter to Accept Prompt" the transaction is added to EnterpriseOne	Confirm the Replenishment by Item Confirmation results		

Overall Test Case Results

Pass/Fail:	
Tester/Date:	
Re-Tester/Date:	

Actual Results:	
------------------------	--

Comments:	
------------------	--