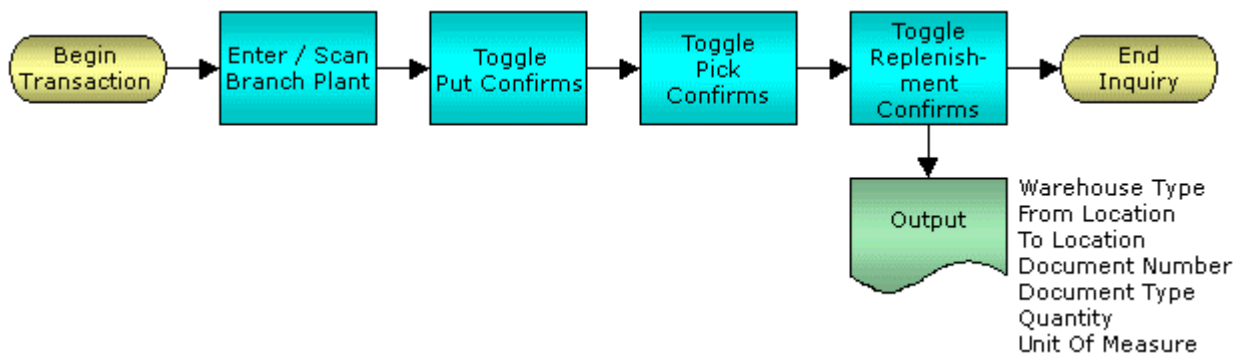


Warehouse Jobs Inquiry



© The DataMAX Software Group Inc
5049 Robert J Mathews Parkway, Suite 100
El Dorado Hills, CA 95762
(916) 939-4065

JD Edwards ENTERPRISEONE® are registered trademarks of Oracle® and protected by national and international copyright laws.

License Agreement

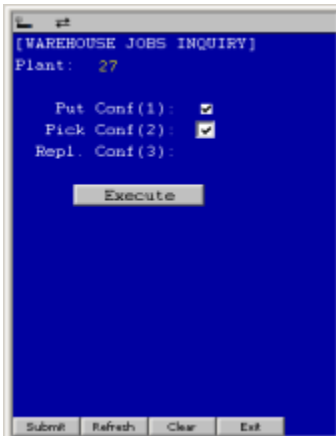
All information contained in this document is **Copyright 2006, the DataMAX Software Group, Inc., All Rights Are Reserved by DataMAX.** This document may not be published, nor used without the prior written consent of DataMAX. **Use of the RFGen Software 'Open Source' code is at all times subject to the DataMAX Open Source Licensing Agreement,** which must be accepted at the time the source code is installed on your computer system. For your convenience, a text copy of the Open Source Licensing Agreement is also loaded (and may be printed from) your RFGen based system.

Requirements: RFGen Version 3.2.0.25 or later
RFGen JDEdwards Integration Suite

TABLE OF CONTENTS

FWHQJO0100 – WAREHOUSE JOBS INQUIRY	2
✓ VALIDATIONS	2
✓ EDITS	2
⇨ FUNCTION KEYS	2
TEST SCRIPT DESCRIPTION: WH INQUIRY OPEN JOBS	3
RFGEN INPUT REQUIREMENTS	3
JD EDWARDS PROCESSING OPTION SETTINGS	3
EXECUTION PROCEDURES	4
OVERALL TEST CASE RESULTS	5

FWHQJ00100 – Warehouse Jobs Inquiry



This transaction performs inquiries on Put, Pick, and Replenishment Confirmation transactions based on the suggestions that have been created in the EnterpriseOne warehouse suggestion file and the current status of the order.

The following conditions apply to the RFGGen implementation for the Warehouse Jobs Inquiry within the EnterpriseOne environment.

Note: any of these parameters may be easily adjusted to meet the unique requirements of your company.

✓ Validations

Prompt	Table	Field
Branch Plant	F4611	R2MCU

✓ Edits

Condition	Table
Default Branch Plant	F40095

⇐ Function Keys

Key	Function
F1	Search Data for Current Field
F2	Refresh the Current Screen Display
F3	
F4	Exits Transaction

Test Script Description: WH Inquiry Open Jobs

RFGen Input Requirements

Before you begin testing, ensure, for the combination of branch/plant(s) and item(s) you will be testing, that the following is setup in EnterpriseOne or PeopleSoft World.

- a. Plant

JD Edwards Processing Option Settings

Enter the Processing Option values, which correspond, to the version you selected for testing.

JDE Version: ZJDE0001_____

Tab	Processing Option Description	Value

Execution Procedures

ID	Test Case	Expected Result	Pass	Fail
1	Type in a valid Plant _____ Press the ENTER key	RFGEN will validate and accept the plant entered		
2	Type in an invalid Plant _____ Press the ENTER key	RFGEN will validate and display an error message – the field will continue to error out until corrected		
3	Press the “F1” key with the cursor in the Plant field	RFGEN will display a list of branch/plants		
4	Press the “F1” key with the cursor in the Plant field to select and return an Plant	RFGEN will display a list of branch/plants and when selected, the Plant will be returned		
5	Place a checkmark in the Put Conf (1), Pick Conf (2), and Repl Conf (3) boxes Press the EXECUTE button	RFGEN will list the ‘from’ and ‘to’ locations, document number, document type, quantity, and UOM for putaway, pick, and replenishment confirmations		
6	Place a checkmark in the Put Conf (1) box only Press the EXECUTE button	RFGEN will list the putaway confirmations		
7	Place a checkmark in the Pick Conf (2) box only Press the EXECUTE button	RFGEN will list the pick confirmations		
8	Place a checkmark in the Replenishment Conf (3) box only Press the EXECUTE button	RFGEN will list the replenishment confirmations		
9	After reviewing the WH Inquiry Open Jobs display	Confirm the WH Inquiry Open Jobs results		

Overall Test Case Results

Pass/Fail:	
Tester/Date:	
Re-Tester/Date:	

Actual Results:	
------------------------	--

Comments:	
------------------	--