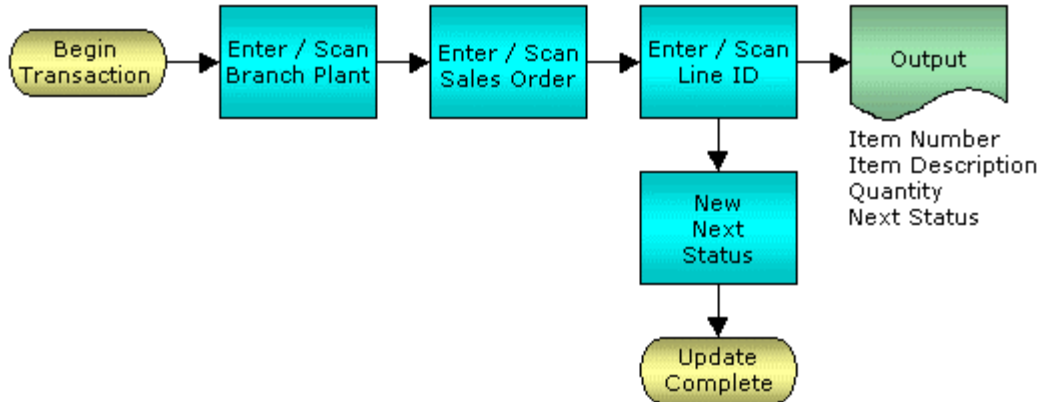


# Sales Order Speed Status Update



© The DataMAX Software Group Inc  
5049 Robert J Mathews Parkway, Suite 100  
El Dorado Hills, CA 95762  
(916) 939-4065

JD Edwards ENTERPRISEONE® are registered trademarks of Oracle® and protected by national and international copyright laws.

## License Agreement

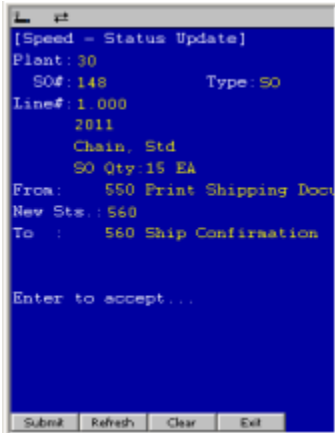
All information contained in this document is **Copyright 2006, the DataMAX Software Group, Inc., All Rights Are Reserved by DataMAX.** This document may not be published, nor used without the prior written consent of DataMAX. **Use of the RFGen Software 'Open Source' code is at all times subject to the DataMAX Open Source Licensing Agreement,** which must be accepted at the time the source code is installed on your computer system. For your convenience, a text copy of the Open Source Licensing Agreement is also loaded (and may be printed from) your RFGen based system.

Requirements: RFGen Version 3.2.0.25 or later  
RFGen JDEdwards Integration Suite

## TABLE OF CONTENTS

<b>FSOSU0100 – SPEED STATUS UPDATE .....</b>	<b>2</b>
✓ VALIDATIONS .....	2
✓ EDITS .....	2
⇨ FUNCTION KEYS .....	2
<b>ENTERPRISEONE PROGRAMS - REFERENCE.....</b>	<b>3</b>
ENTERPRISEONE SPEED STATUS UPDATE: P42040 .....	3
<b>HOW JDEDWARDS® PROCESSING OPTION AFFECTS RFGEN.....</b>	<b>4</b>
AFFECTED RFGEN FORMS AND TRANSACTION MACROS.....	4
SETUP AN RFGEN MENU .....	4
PROCESSING OPTIONS: P42040 SALES ORDER SPEED STATUS UPDATE .....	5
<b>TEST SCRIPT DESCRIPTION: SPEED STATUS UPDATE (P42040).....</b>	<b>6</b>
RFGEN INPUT REQUIREMENTS.....	6
JD EDWARDS PROCESSING OPTION SETTINGS.....	6
EXECUTION PROCEDURES.....	7
OVERALL TEST CASE RESULTS .....	8

## FSOSU0100 – Speed Status Update



This transaction updates status codes on Sales Order lines.

The following conditions apply to the RFGGen implementation for the Speed Status Update transaction within the EnterpriseOne environment.

Note: any of these parameters may be easily adjusted to meet the unique requirements of your company.

### ✓ Validations

Prompt	Table	Field
Document Number	F4211	SDDOCO
Next Status	F40203	FSTRTY

### ✓ Edits

Condition	Table
Default Branch Plant	F40095

### ⇐ Function Keys

Key	Function
F1	Search Data for Current Field
F2	Refresh the Current Screen Display
F3	
F4	Exits Transaction

## EnterpriseOne Programs - Reference

Application Name(s)	Code	Table
Status Code Update	P42040	F4211

## EnterpriseOne Speed Status Update: P42040

Select    Find    Close    Seg...    New...    Dis...    Abo...   Links   Added...   OLE...   Internet

Order Number      SO   Branch/Plant  

Additional Selections Exist

Order Number	Or Ty	Order Co	Line Number	2nd Item Number	Last Sts	Next Sts	Ln Ty	Sold To Number	Sold To Name	Order Description
148	SO	00001	1.000	2011	550	560	S	4242	Capital System	Chain, Std

## How JDEdwards® Processing Option affects RFGen

This documentation explains which of the JDE Processing Options are used by RFGen and how the red highlighted Proc.Options effect the RFGen script.

### Affected RFGen Forms and Transaction Macros

Description	Form name	Transaction Macro Name
SO - Speed Status Update	FSOSU0100	TSOSU0100

### Setup an RFGen Menu

To implement an RFGen Form using JDE Processing Options in an RFGen Menu the JDE Version needs to be specified.

Enter the Form name, followed by a Space. Enter “-Vers=” and the JDE Version.

Form/Menu	Description to Display
FSOSU0100 -Vers=ZJDE0001	Speed Status Update

## Processing Options: P42040 Sales Order Speed Status Update

<-- Defaults -->

0001 1 1> Status Code (From) --> [520]

RFgen uses this value to filter on next Status (SDNXTR) Status from....

0002 1 2> Status Code (Thru) --> [999]

RFgen uses this value to filter on next Status (SDNXTR) Status to....

0003 1 3> Based On Status --> [1]

0004 1 4> Default Next Status Code to Update --> [1]

RFgen defaults the new Status based on the value in this Processing Option.

0005 1 5> Option --> [5]

0006 1 6> Order Type --> [ ]

---- <-- Versions -->

0007 2 1> Sales Order Entry Version --> [ZJDE0001]

---- <-- Warehouse -->

0008 3 1> Request Processing Mode --> [1]

0009 3 2> If processing pick requests uses the sub --> [2]

0010 3 3> Override Next Status for Sales Order Lin --> [320]

## Test Script Description: Speed Status Update (P42040)

### RFGen Input Requirements

Before you begin testing, ensure, for the combination of branch/plant(s) and item(s) you will be testing, that the following is setup in EnterpriseOne or PeopleSoft World.

- a. An order activity status for non-inventory line items
- b. A non-inventory line item line type

### JD Edwards Processing Option Settings

Enter the Processing Option values, which correspond, to the version you selected for testing.

JDE Version: ZJDE0001\_\_\_\_\_

Tab	Processing Option Description	Value
Defaults	a. Status Code (From) b. Status Code (Thru) c. Default Next Status Code to Update	

## Execution Procedures

ID	Test Case	Expected Result	Pass	Fail
1	Type in a valid Branch/Plant _____ Press the <b>ENTER</b> key	RFGEN will validate and accept the branch/plant entered.		
2	Type in a valid SO# _____ Press the <b>ENTER</b> key	RFGEN will validate and accept the sales order number entered.		
3	Type in a valid Type _____ Press the <b>ENTER</b> key	RFGEN will validate and accept the document type entered.		
4	Type in a valid Line# _____ Press the <b>ENTER</b> key	RFGEN will validate and accept the line number entered.		
5	Type in an invalid Branch/Plant _____ Press the <b>ENTER</b> key	RFGEN will validate the branch/plant entered and display an error message – the field will continue to error out until corrected		
6	Type in an invalid SO# _____ Press the <b>ENTER</b> key	RFGEN will validate and display an error message – the field will continue to error out until corrected		
7	Type in an invalid Type _____ Press the <b>ENTER</b> key	RFGEN will validate and display an error message – the field will continue to error out until corrected		
8	Type in a invalid Line# _____ Press the <b>ENTER</b> key	RFGEN will validate and display an error message – the field will continue to error out until corrected		
9	Press the “F1” key with the cursor in the branch/plant field	RFGEN will display a list of branch/plants		
10	Press the “F1” key with the cursor in the branch/plant field to select and return a branch/plant	RFGEN will display a list of branch/plants and when selected, the branch/plant will be returned		
11	Press the “F1” key with the cursor in the SO # field	RFGEN will display a list of sales order numbers		
12	Press the “F1” key with the cursor in the SO# field to select and return a sales order number	RFGEN will display a list of sales order numbers and when selected, the sales order number will be returned		
13	Press the “F1” key with the cursor in the Type field	RFGEN will display a list of order types		
14	Press the “F1” key with the cursor in the Type field to select and return an order type	RFGEN will display a list of order types and when selected, the order type will be returned		
15	Press the “F1” key with the cursor in the Line# field	RFGEN will display a list of line numbers		
16	Press the “F1” key with the cursor in the Line# field to select and return a Line#	RFGEN will display a list of line numbers and when selected, the line number will be returned		
17	Type in a valid status To _____	RFGEN will validate the status “To” and		

	Press the <b>ENTER</b> key	advance the status to the "new" status		
18	Type in an invalid status To _____ Press the <b>ENTER</b> key	RFGEN will validate the status "To" and display an error message		
19	At the RFGEN "Enter to Accept Prompt" the transaction is added to EnterpriseOne	Confirm speed status update results		

**Overall Test Case Results**

<b>Pass/Fail:</b>	
<b>Tester/Date:</b>	
<b>Re-Tester/Date:</b>	

<b>Actual Results:</b>	
------------------------	--

<b>Comments:</b>	
------------------	--