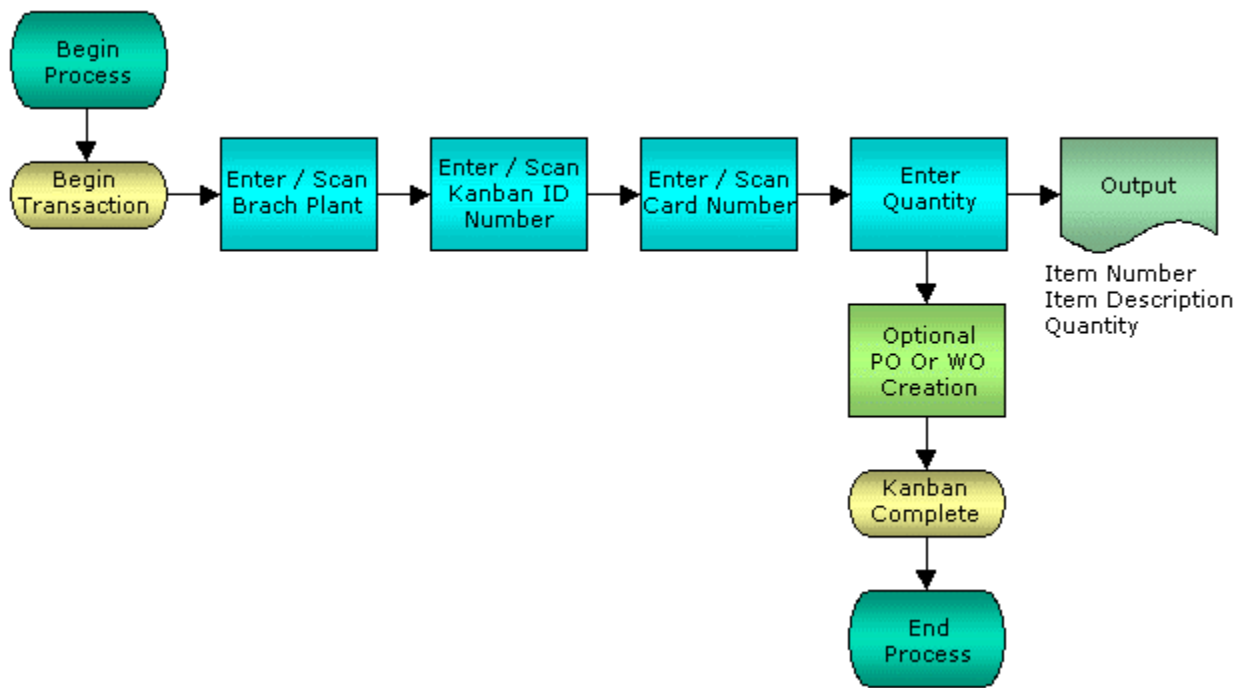


Kanban Check Out



© The DataMAX Software Group Inc
5049 Robert J Mathews Parkway, Suite 100
El Dorado Hills, CA 95762
(916) 939-4065

JD Edwards ENTERPRISEONE® are registered trademarks of Oracle® and protected by national and international copyright laws.

License Agreement

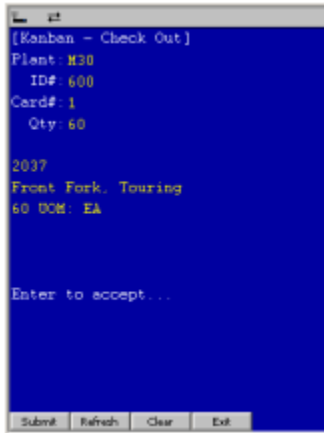
All information contained in this document is **Copyright 2006, the DataMAX Software Group, Inc., All Rights Are Reserved by DataMAX.** This document may not be published, nor used without the prior written consent of DataMAX. **Use of the RFGen Software 'Open Source' code is at all times subject to the DataMAX Open Source Licensing Agreement,** which must be accepted at the time the source code is installed on your computer system. For your convenience, a text copy of the Open Source Licensing Agreement is also loaded (and may be printed from) your RFGen based system.

Requirements: RFGen Version 3.2.0.25 or later
RFGen JDEdwards Integration Suite

Table of Contents

FKBCO100 – KANBAN CHECK OUT	2
✓ VALIDATIONS	2
<i>Field</i>	2
✓ EDITS	2
⇌ FUNCTION KEYS	2
CONSIDERATIONS	3
ENTERPRISEONE PROGRAMS - REFERENCE.....	4
ENTERPRISEONE KANBAN CONSUMPTION: P3157	4
HOW JDEDWARDS® PROCESSING OPTION AFFECTS RFGEN.....	5
AFFECTED RFGEN FORMS AND TRANSACTION MACROS.....	5
SETUP AN RFGEN MENU	5
PROCESSING OPTIONS: P3157 KANBAN PROCESSING	6
BASIC TEST SCRIPT	7
TEST SCRIPT DESCRIPTION: KB KANBAN CHECK OUT (P3157)	8
RFGEN INPUT REQUIREMENTS	8
JD EDWARDS PROCESSING OPTION SETTINGS	8
EXECUTION PROCEDURES.....	9
OVERALL TEST CASE RESULTS	10

FKBCO100 – Kanban Check Out



This transaction allows you to check out materials that have been set up as Kanban items to indicate usage and the need for replenishment. The Item Ledger (Cardex) is not updated at this step in the Kanban process.

The following conditions apply to the RFGGen implementation for the Kanban Check Out transaction within the EnterpriseOne environment.

Note: any of these parameters may be easily adjusted to meet the unique requirements of your company.

✓ Validations

Prompt	Table	Field
Plant	F41001	CIMCU
Kanban ID	F3016	KMKID1
Card	F30161	KDCDN

✓ Edits

Condition	Table
Default Branch Plant	F40095

⇄ Function Keys

Key	Function
F1	Search Data for Current Field
F2	Refresh the Current Screen Display
F3	
F4	Exits Transaction

Considerations

1. What EnterpriseOne version is used to process the Kanban Consumption?
2. What processing options are set to process Kanban Consumption?
3. Is Branch to default in based on user?

EnterpriseOne Programs - Reference

Application Name(s)	Code	Table
Kanban Consumption	P3157	NA

EnterpriseOne Kanban Consumption: P3157

OK Find Can... New... Dis... Ago Links Check... OLE... Internet

Selection Criteria Defaults

Consuming Branch

Item Number

Consuming Location Kanban ID

Supplier Kanban Status

	600								
	Kanban ID	Card Number	Kanban Status	2nd Item Number	Transaction Quantity	UM	Container Size	Kanban Size	Consuming Location
	600	1 2		2037	60	EA	60	60	LA.80 .

How JDEdwards® Processing Option affects RFGen

This documentation explains which of the JDE Processing Options are used by RFGen and how the red highlighted Proc.Options effect the RFGen script.

Affected RFGen Forms and Transaction Macros

Description	Form name	Transaction Macro Name
KB - Kanban Check In	FKBCI0100	TKBCI0100
KB - Kanban Check Out	FKBCO0100	TKBCO0100

Setup an RFGen Menu

To implement an RFGen Form using JDE Processing Options in an RFGen Menu the JDE Version needs to be specified.

Enter the Form name, followed by a Space. Enter “-Vers=” and the JDE Version.

Form/Menu	Description to Display
FKBCO0100 -Vers=ZJDE0001	1-Kanban Check Out
FKBCI0100 -Vers=ZJDE0002	2-Kanban Check In

Processing Options: P3157 Kanban Processing

```
---- <-- Mode -->
0001 1 1> Enter a '1' to set mode to Kanban Supply      --> [ ]
0002 1 2> Enter a '1' to prompt the confirmation o    --> [1]
0003 1 3> Enter Kanban Status to display, if left     --> [ ]
```

RFGen uses this value to filter Kanban transactions.

```
---- <-- Defaults -->
0004 2 1> Item Number (Optional)                      --> [ ]
0005 2 2> Location (Optional)                        --> [ ]
0006 2 3> Enter number of hours equivalent to one     --> [0]
0007 2 4> Enter the Closed Status for a rate sched   --> [ ]
0008 2 5> Bill of Material Type                     --> [ ]
0009 2 6> Employee Number (Optional)                --> [ ]
0010 2 7> Transfer Order Receipt Location           --> [ ]
```

```
---- <-- Process -->
0011 3 1> Enter a '1' to automatically call Work O   --> [1]
0012 3 2> Enter a '1' to perform a blind execution   --> [1]
0013 3 3> Enter a '1' to perform a blind execution   --> [1]
0014 3 4> Enter a '1' to perform a blind execution   --> [1]
0015 3 5> Enter a '1' to perform a blind execution   --> [1]
0016 3 6> Enter a '1' to perform a blind execution   --> [1]
```

RFGen requires blind execution!

```
---- <-- Purchasing -->
0017 4 1> Create Purchase Order                      --> [2]
0018 4 2> Enter a '1' to trigger an EDI 862 Transa   --> [ ]
```

```
---- <-- Versions -->
0019 5 2> Rate Header Maintenance (P3109)           --> [ ]
0020 5 3> Part Availability (P30205)                 --> [ ]
0021 5 4> Work Order Entry (P48013)                  --> [ ]
0022 5 5> Work Order Processing (R31410)             --> [ ]
0023 5 6> Open Orders Inquiry (P3160W)               --> [ ]
0024 5 7> Purchase Orders Entry (P4310)              --> [ZJDE0029]
0025 5 8> Purchase Order Print (R43500)              --> [ ]
0026 5 9> Purchase Order Receipts (P4312)           --> [ ]
0027 5 10> Super Backflush (P31123)                  --> [ ]
0028 5 11> Hours & Quantities (P311221)              --> [ ]
0029 5 12> Material Issues (P31113)                  --> [ ]
0030 5 13> Work Order Completions (P31114)           --> [ ]
0031 5 14> Inventory Transfers (P4113)               --> [ ]
0032 5 15> Sales Order Entry (P4210)                 --> [ ]
0033 5 16> Shipment Confirmation (P4205)             --> [ ]
```

Basic Test Script

1. Determine which Kanban IDs will be used to perform the Kanban Consumption on.
2. Record quantities on hand from the Item Ledger for the Branch Plants, Item Numbers and their associated lots and locations for use in the transaction.
3. Create and document the following scenarios:
 - a. Select Items and perform the Check Out row exit from EnterpriseOne.
 - b. Verify that the Status of the Kanban item has been updated to reflect that the Kanban card has been Checked Out.
 - c. Verify that the Item Ledger (Cardex) has not been updated. The Item Ledger is updated at Kanban Check In.

Test Script Description: KB Kanban Check Out (P3157)

RFGen Input Requirements

Before you begin testing, ensure, for the combination of branch/plant(s) and item(s) you will be testing, that the following is setup in EnterpriseOne or PeopleSoft World.

- a. Branch/Plant
- b. Kanban Id
- c. Card

JD Edwards Processing Option Settings

Enter the Processing Option values, which correspond, to the version you selected for testing.

JDE Version: ZJDE0001 _____

Tab	Processing Option Description	Value
Mode	a. Enter Kanban Status to display, if left blank all statuses are displayed	
Process	a. Enter a '1' to perform a blind execution of Hours Quantities b. Enter a '1' to perform a blind execution of Material Issues c. Enter a '1' to perform a blind execution of Work Order Completions d. Enter a '1' to perform a blind execution of Shipment Confirmation e. Enter a '1' to perform a blind execution of Inventory Transfers	

Execution Procedures

ID	Test Case	Expected Result	Pass	Fail
1	Type in a valid Branch/Plant _____ Press the ENTER key	RFGEN will validate and accept the branch/plant entered		
2	Type in a valid ID# _____ Press the ENTER key	RFGEN will validate and accept the id number entered		
3	Type in a valid Card# _____ Press the ENTER key	RFGEN will validate and accept the card number entered		
4	Type in a valid Qty _____ Press the ENTER key	RFGEN will validate and accept the quantity entered		
5	Type in an invalid Branch/Plant _____ Press the ENTER key	RFGEN will validate the branch/plant entered and display an error message – the field will continue to error out until corrected		
6	Type in an invalid ID# _____ Press the ENTER key	RFGEN will validate and display an error message – the field will continue to error out until corrected		
7	Type in an invalid Card# _____ Press the ENTER key	RFGEN will validate and display an error message – the field will continue to error out until corrected		
8	Type in an invalid Qty _____ Press the ENTER key	RFGEN will validate and display an error message – press the Yes/No button to continue		
9	Press the “F1” key with the cursor in the branch/plant field	RFGEN will display a list of branch/plants		
10	Press the “F1” key with the cursor in the branch/plant field to select and return a branch/plant	RFGEN will display a list of branch/plants and when selected, the branch/plant will be returned		
11	Press the “F1” key with the cursor in the Card# field	RFGEN will display a list of card numbers		
12	Press the “F1” key with the cursor in the Card# field to select and return a card number	RFGEN will display a list of card numbers and when selected, the card number will be returned		
13	If the “Enter Kanban Status to display, if left blank all statuses are displayed” processing option is activated (non-blank)	RFGEN will retrieve the status from the processing option and allow Kanban processing for the specified status		
14	If the “Enter Kanban Status to display, if left blank all statuses are displayed” processing option is deactivated (blank)	RFGEN will allow Kanban processing for all eligible statuses		
15	If versions are specified for “Enter a ‘1’ to perform a blind execution of Hours Quantities”; Enter a ‘1’ to perform a blind execution of Material Issues”; “Enter a ‘1’ to perform a blind	RFGEN will retrieve the versions specified in the processing options—RFGEN runs in blind execution mode only, i.e., versions must be specified!		

	execution of Work Order Completions”; “Enter a ‘1’ to perform a blind execution of Shipment Confirmation”; “Enter a ‘1’ to perform a blind execution of Inventory Transfers” ancillary processes			
16	At the RFGEN “Enter to Accept Prompt” the transaction is added to EnterpriseOne	Confirm the Kanban Check Out results		

Overall Test Case Results

Pass/Fail:	
Tester/Date:	
Re-Tester/Date:	

Actual Results:	
------------------------	--

Comments:	
------------------	--