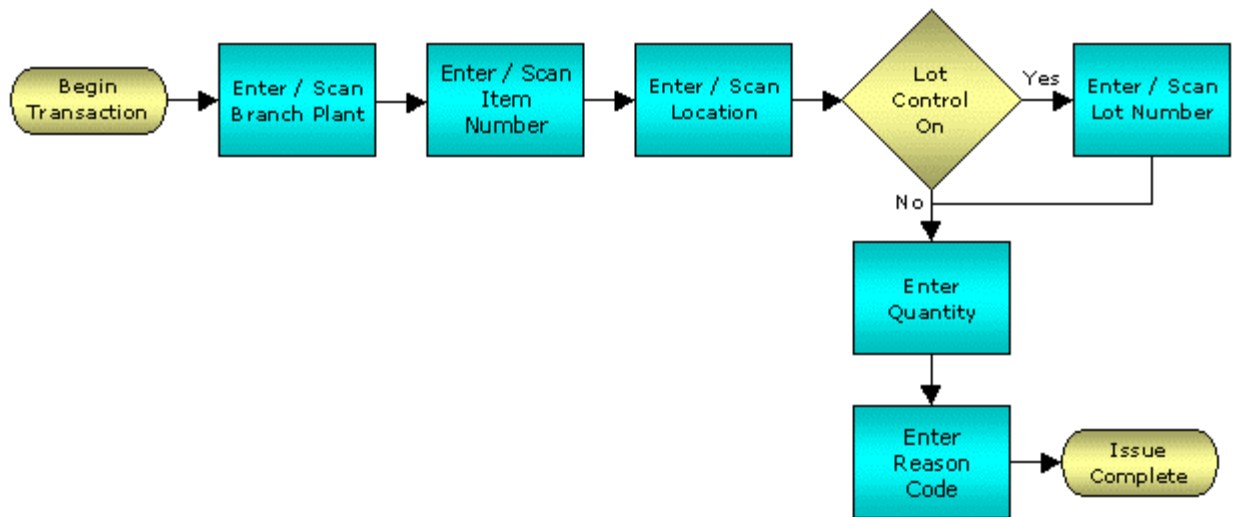


Inventory Issue



© The DataMAX Software Group Inc
5049 Robert J Mathews Parkway, Suite 100
El Dorado Hills, CA 95762
(916) 939-4065

JD Edwards ENTERPRISEONE® are registered trademarks of Oracle® and protected by national and international copyright laws.

License Agreement

All information contained in this document is **Copyright 2006, the DataMAX Software Group, Inc., All Rights Are Reserved by DataMAX.** This document may not be published, nor used without the prior written consent of DataMAX. **Use of the RFGen Software 'Open Source' code is at all times subject to the DataMAX Open Source Licensing Agreement,** which must be accepted at the time the source code is installed on your computer system. For your convenience, a text copy of the Open Source Licensing Agreement is also loaded (and may be printed from) your RFGen based system.

Requirements: RFGen Version 3.2.0.25 or later
RFGen JDEdwards Integration Suite

Table of Contents

FIMII0100 – INVENTORY ISSUES	2
✓ VALIDATIONS.....	2
✓ EDITS	2
⇨ FUNCTION KEYS	2
CONSIDERATIONS	3
ENTERPRISEONE PROGRAMS - REFERENCE.....	4
ENTERPRISEONE INVENTORY ISSUES: P4112	4
ENTERPRISEONE CARDEX: P4111	4
HOW JDEDWARDS® PROCESSING OPTION AFFECTS RFGEN.....	5
AFFECTED RFGEN FORMS AND TRANSACTION MACROS	5
SETUP AN RFGEN MENU	5
PROCESSING OPTIONS: P4112 INVENTORY ISSUES.....	6
BASIC TEST SCRIPT	7
TEST SCRIPT DESCRIPTION: INVENTORY ISSUE (P4112)	8
RFGEN INPUT REQUIREMENTS	8
JD EDWARDS PROCESSING OPTION SETTINGS	8
EXECUTION PROCEDURES	8
OVERALL TEST CASE RESULTS	10

FIMII0100 – Inventory Issues



This transaction issues inventory from a warehouse. An Inventory Issue record is recorded and the Item Ledger (Cardex) is updated in EnterpriseOne.

The following conditions apply to the RFGGen implementation for the Inventory Issue transaction within the EnterpriseOne environment.

Note: any of these parameters may be easily adjusted to meet the unique requirements of your company.

✓ Validations

Prompt	Table	Field
Plant	F41001	CIMCU
Item	F4101	IMLITM
Location	F41021	LILOCN
Lot	F4108	IOLOTN
Quantity	F41021	LIPQOH
Reason	F0005	UDC 42/RC

✓ Edits

Condition	Table
Default Branch Plant	F40095
Quantity not greater than Quantity on Hand	F41021
Quantity entered <=0	NA

⇄ Function Keys

Key	Function
F1	Search Data for Current Field
F2	Refresh the Current Screen Display
F3	
F4	Exits Transaction

Considerations

1. What EnterpriseOne version is used to process the Inventory Issue transaction?
2. What processing options have been set to process Inventory Issues?
3. Will you use different document types?
4. Will Branch default Branch default based on user?
5. Will transactions on negative quantities be allowed?
6. Are limitations placed on the dollar amount of Inventory Issued?
7. Do you use lot control?
8. Do you use serialization?

EnterpriseOne Programs - Reference

Application Name(s)	Code	Table
Inventory Issues	P4112	NA
Item Ledger (Cardex)	P4111	F4111

EnterpriseOne Inventory Issues: P4112

OK Can... New... Dis... Ago

Links ▼ Copy... OLE... Internet

Document Number: 181
 Document Type: II Inventory Issue
 G/L Date:
 Extension: RFGen Inventory Issues
 Branch/Plant: 30
 Transaction Date: 8/1/2005
 Batch Number: 108

Item Number	Item Description	Quantity	UM	Secondary Quantity	Sec UoM	Location	Lot/Serial	Unit Cost
2004	Cro-Moly Frame	3	EA					190.0000
								0.0000

EnterpriseOne Cardex: P4111

Select Find Close Seg... New... Dis... Ago

Links ▼ Detail OLE... Internet

Item Number: 2004 Cro-Moly Frame
 Branch/Plant: 30
 Location:
 Lot/Serial:
 Quantity On Hand: 490 EA Value: 93,100.00
 Secondary On Hand: EA

Document Number	Doc Type	Doc Co	Transaction Date	Branch/Plant	Quantity	Trans UoM	Secondary Transaction Qty	Secondary Trans UoM
181	II	00001	8/1/2005	30	3	EA		

How JDEdwards® Processing Option affects RFgen

This documentation explains which of the JDE Processing Options are used by RFgen and how the red highlighted Proc.Options effect the RFgen script.

Affected RFgen Forms and Transaction Macros

Description	Form name	Transaction Macro Name
IM - Inventory Issues	FIMII0100	TIMII0100

Setup an RFgen Menu

To implement an RFgen Form using JDE Processing Options in an RFgen Menu the JDE Version needs to be specified.

Enter the Form name, followed by a Space. Enter “-Vers=” and the JDE Version.

Form/Menu	Description to Display
FIMII0100 -Vers=ZJDE0001	1-Issues

Processing Options: P4112 Inventory Issues

---- <-- Defaults -->

0001 1 1> **Document Type** --> [II]

RFgen retrieves the Document Type from the JDE Processing Option.

0002 1 2> **Location/Lot** --> [I]

If "1" RFgen defaults Lot Number and Location from Primary Location.

---- <-- Versions -->

0003 2 2> **Journal Entries (P)** --> []

RFgen passes the specified Version to the related Business Function.

0004 2 3> Item Ledger (P) --> []

0005 2 4> Warehouse Request (P46100) --> []

---- <-- Process -->

0006 3 1> Issue Type --> []

0007 3 2> Account Number --> []

0008 3 3> Cost Entry --> []

0009 3 4> **Journal Entries** --> []

RFgen passes the specified Value to the related Business Function.

0010 3 5> **Issue Quantity** --> []

RFgen calculates and validates the max qty. to Issue based on this value.

0011 3 6> **Lots on Hold** --> []

Depending on this value RFgen allows issuing when a lot is on Hold.

0012 3 7> **Item Sales History** --> []

RFgen passes the specified Value to the related Business Function.

---- <-- Interop -->

0013 4 1> Transaction Type --> []

---- <-- Agreement -->

0014 5 1> Agreement Assignment (FUTURE) --> []

Basic Test Script

1. Record quantities on hand from the Item Ledger for the Branch Plants, Item Numbers and their associated lots and locations that you will perform Inventory Issues on.
2. Create and document the following scenarios:
 - a. Issue an amount within the quantity on hand for an item
 - b. Issue a negative amount for an item. A negative issue warning should appear
 - c. Issue more than the quantity on hand for an item. An “Exceeding quantity on hand” error should appear.
 - d. Attempt to transact on items that are not set up in particular branch plants.
 - e. If your customization required a threshold be placed on an item, attempt to issue over the dollar amount authorized for a particular item. An “exceeding threshold limit” error should appear.
3. Review the Issues Table and the Item Ledger for the proper document types, transaction records, and that the quantity on hand updated to the correct amounts on your valid transactions.

Test Script Description: Inventory Issue (P4112)

RFGen Input Requirements

Before you begin testing, ensure, for the combination of branch/plant(s) and item(s) you will be testing, that the following is setup in EnterpriseOne or PeopleSoft World.

- a. Item
- b. Quantity On Hand
- c. Quantity Available

JD Edwards Processing Option Settings

Enter the Processing Option values, which correspond, to the version you selected for testing.

JDE Version: ZJDE0001_____

Tab	Processing Option Description	Value
Defaults	<ul style="list-style-type: none"> a. Document Type b. Location/Lot 	
Process	<ul style="list-style-type: none"> a. Issue Quantity b. Lots on Hold c. Item Sales History 	

Execution Procedures

Id	Test Case	Expected Result	Pass	Fail
1	Type in a valid Branch/Plant _____ Press the ENTER key	RFGEN will validate and accept the branch/plant entered.		
2	Type in a valid Item# _____ Press the ENTER key	RFGEN will validate and accept the item entered.		
3	Type in a valid locn _____ Press the ENTER key	RFGEN will validate and accept the locn entered.		
4	Type in an invalid Branch/Plant _____ Press the ENTER key	RFGEN will validate the branch/plant entered and display an error message – the field will continue to error out until corrected		
5	Type in an invalid Item# _____ Press the ENTER key	RFGEN will validate and display an error message – the field will continue to error out until corrected		
6	Type in an invalid locn _____ Press the ENTER key	RFGEN will validate and display an error message – the field will continue to error out until corrected		

		until corrected		
7	Press the "F1" key with the cursor in the branch/plant field	RFGEN will display a list of branch/plants		
8	Press the "F1" key with the cursor in the branch/plant field to select and return a branch/plant to the branch/plant field	RFGEN will display a list of branch/plants and when selected, the branch/plant will be returned to the branch/plant field		
9	Press the "F1" key with the cursor in the item# field	RFGEN will display a list of items		
10	Press the "F1" key with the cursor in the locn field	RFGEN will display a list of locations		
11	Press the "F1" key with the cursor in the locn field to select and return a location to the locn field	RFGEN will display a list of locations and when selected, the location will be returned to the locn field		
12	Press the "F1" key with the cursor in the item# field to select and return an item to the item# field	RFGEN will display a list of items and when selected, the item will be returned to the item# field		
13	If the Location/Lot processing option is set to "1" Item#_____ Qty____ Location_____	RFGEN will validate the location and issue the quantity from the primary location		
14	If the Location/Lot processing option is set to "blank " Item#_____ Qty____ Location_____	RFGEN will validate the location and issue the quantity from the specified location		
15	If the Issue Quantity processing option is set to "blank" and the quantity entered exceeds the available quantity at the specified location Item#_____ Qty____ Location_____	RFGEN will disallow the quantity and display an error message		
16	If the Issue Quantity processing option is set to "1" and the quantity entered exceeds the available quantity at the specified location Item#_____ Qty____ Location_____	RFGEN will allow the available quantity to go negative		
17	If the Issue Quantity processing option is set to "2" and the quantity entered exceeds the on hand quantity at the specified location Item#_____ Qty____ Location_____	RFGEN will disallow the quantity and display an error message		
18	If the Lot on Hold processing option is set to "1" Item#_____ Qty____	RFGEN will not allow the lot to be used for an inventory issue		

	Location_____			
19	If the Lot on Hold processing option is set to "1" Item#_____ Qty_____ Location_____	RFGEN will allow the lot to be used for an inventory issue.		
20	If the Item Sales History processing option is set to "1" Item#_____ Qty_____ Location_____	RFGEN will allow the Item Sales History Table to be updated		
21	If the Item Sales History processing option is set to "blank" Item#_____ Qty_____ Location_____	RFGEN will not allow the Item Sales History Table to be updated		
22	At the RFGEN "Enter to Accept Prompt" the transaction is added to EnterpriseOne	Confirm the inventory issue results		

Overall Test Case Results

Pass/Fail:	
Tester/Date:	
Re-Tester/Date:	

Actual Results:	
------------------------	--

Comments: