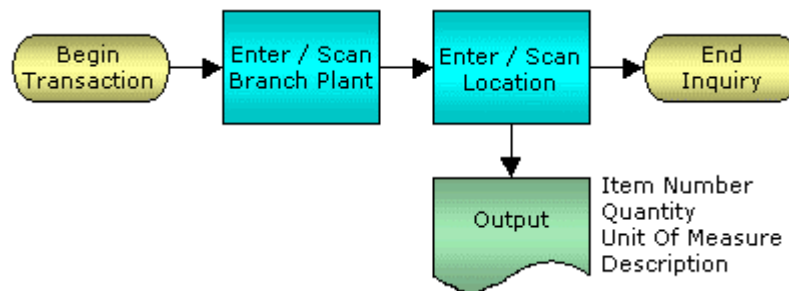


Item Inquiry by Location



© The DataMAX Software Group Inc
5049 Robert J Mathews Parkway, Suite 100
El Dorado Hills, CA 95762
(916) 939-4065

JD Edwards ENTERPRISEONE® are registered trademarks of Oracle® and protected by national and international copyright laws.

License Agreement

All information contained in this document is **Copyright 2006, the DataMAX Software Group, Inc., All Rights Are Reserved by DataMAX.** This document may not be published, nor used without the prior written consent of DataMAX. **Use of the RFGen Software 'Open Source' code is at all times subject to the DataMAX Open Source Licensing Agreement,** which must be accepted at the time the source code is installed on your computer system. For your convenience, a text copy of the Open Source Licensing Agreement is also loaded (and may be printed from) your RFGen based system.

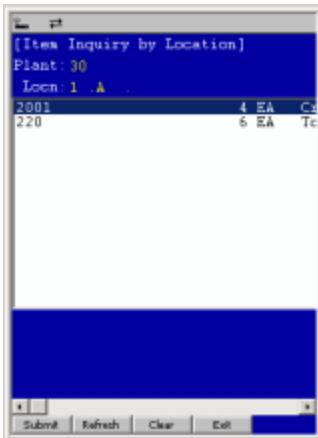
Requirements: RFGen Version 3.2.0.25 or later
RFGen JDEdwards Integration Suite

Table of Contents

FIMQL0100 – ITEM INQUIRY BY LOCATION 2

✓ VALIDATIONS	2
⇨ FUNCTION KEYS	2
ENTERPRISEONE PROGRAMS - REFERENCE.....	3
ENTERPRISEONE ITEM DETAIL AVAILABILITY: P4100	3
TEST SCRIPT DESCRIPTION: IM INQUIRY BY LOCATION	4
RFGEN INPUT REQUIREMENTS	4
JD EDWARDS PROCESSING OPTION SETTINGS	4
EXECUTION PROCEDURES	4
OVERALL TEST CASE RESULTS	5

FIMQL0100 – Item Inquiry by Location



This transaction displays inventory items by location with the current quantity on hand. If it is a lot item, the inquiry displays lot numbers, as well.

The following conditions apply to the RFGGen implementation of the Item Inquiry by Location transaction within the EnterpriseOne environment.

Note: any of these parameters may be easily adjusted to meet the unique requirements of your company.

✓ Validations

Prompt	Table	Field
Plant	F41001	CIMCU
Location	F41021	LILOCN

⇨ Function Keys

Key	Function
F1	Search Data for Current Field
F2	Refresh the Current Screen Display
F3	
F4	Exits Transaction

EnterpriseOne Programs - Reference

Application Name(s)	Code	Table
Item Detail Availability	P4100	F41021

EnterpriseOne Item Detail Availability: P4100

Item Number	Description	Lot/Serial	Quantity Available	Quantity Inbound	Quantity Outbound	UM
220	Touring Bike, Red		6			EA
2001	Cro-Moly Frame, Red		4			EA

Test Script Description: IM Inquiry By Location

RFGGen Input Requirements

Before you begin testing, ensure, for the combination of branch/plant(s) and item(s) you will be testing, that the following is setup in EnterpriseOne or PeopleSoft World.

- a. Plant
- b. License Plate Number

JD Edwards Processing Option Settings

Enter the Processing Option values, which correspond, to the version you selected for testing.

JDE Version: ZJDE0001_____

Tab	Processing Option Description	Value

Execution Procedures

ID	Test Case	Expected Result	Pass	Fail
1	Type in a valid Plant _____ Press the ENTER key	RFGEN will validate and accept the plant entered		
2	Type in a valid Locn# _____ Press the ENTER key	RFGEN will validate and accept the location entered, and return a list box containing inventory items by location with the current quantity on hand. If the item is lotted, the inquiry will also display lot numbers.		
3	Type in an invalid Plant _____ Press the ENTER key	RFGEN will validate and display an error message – the field will continue to error out until corrected		
4	Type in an invalid LP# _____ Press the ENTER key	RFGEN will validate and display an error message – the field will continue to error out until corrected		
5	Press the “F1” key with the cursor in the Plant field	RFGEN will display a list of branch/plants		
6	Press the “F1” key with the cursor in the Plant field to select and return an Plant	RFGEN will display a list of branch/plants and when selected, the Plant will be returned		
7	Press the “F1” key with the cursor in	RFGEN will display a list of license plate		

	the LP# field	numbers		
8	Press the "F1" key with the cursor in the LP# field to select and return an LP#	RFGEN will display a list of license plate numbers and when selected, the LP# will be returned		
9	After reviewing the Inquiry by Location display	Confirm the Inquiry by Location results		

Overall Test Case Results

Pass/Fail:	
Tester/Date:	
Re-Tester/Date:	

Actual Results:	
------------------------	--

Comments:	
------------------	--