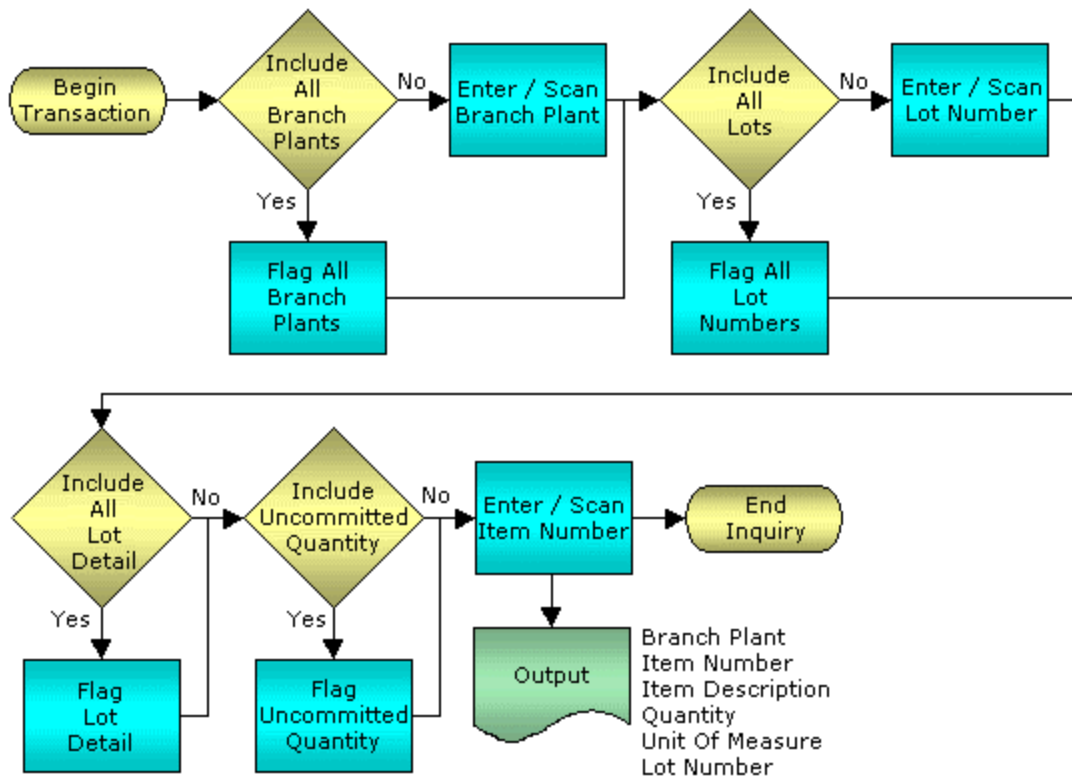


## Location by Item Inquiry



© The DataMAX Software Group Inc  
5049 Robert J Mathews Parkway, Suite 100  
El Dorado Hills, CA 95762  
(916) 939-4065

JD Edwards ENTERPRISEONE® are registered trademarks of Oracle® and protected by national and international copyright laws.

## License Agreement

All information contained in this document is **Copyright 2006, the DataMAX Software Group, Inc., All Rights Are Reserved by DataMAX.** This document may not be published, nor used without the prior written consent of DataMAX. **Use of the RFGen Software 'Open Source' code is at all times subject to the DataMAX Open Source Licensing Agreement,** which must be accepted at the time the source code is installed on your computer system. For your convenience, a text copy of the Open Source Licensing Agreement is also loaded (and may be printed from) your RFGen based system.

Requirements: RFGen Version 3.2.0.25 or later  
RFGen JDEdwards Integration Suite

## Table of Contents

<b>FIMQ0100 – LOCATION INQUIRY BY ITEM INQUIRY .....</b>	<b>2</b>
✓ VALIDATIONS .....	2
⇨ FUNCTION KEYS .....	2
<b>ENTERPRISEONE PROGRAMS - REFERENCE.....</b>	<b>3</b>
ENTERPRISEONE ITEM DETAIL AVAILABILITY: P41021.....	3
<b>TEST SCRIPT DESCRIPTION: IM LOCATION BY ITEM INQUIRY.....</b>	<b>4</b>
RFGEN INPUT REQUIREMENTS .....	4
JD EDWARDS PROCESSING OPTION SETTINGS .....	4
<b>EXECUTION PROCEDURES .....</b>	<b>4</b>
OVERALL TEST CASE RESULTS .....	6

## FIMQ0100 – Location Inquiry by Item Inquiry



This transaction displays inventory locations by item with the current quantity on hand. If it is a lot item, the inquiry displays lot numbers.

If Avail is checked, the quantities will adjust to show all quantity on hand with the exception of those items that are soft or hard committed.

The following conditions apply to the RFGGen implementation for the Location Inquiry by Item transaction within the EnterpriseOne environment.

Note: any of these parameters may be easily adjusted to meet the unique requirements of your company.

### ✓ Validations

Prompt	Table	Field
Plant	F41001	CIMCU
Item	F4111	ILLITM
Location	F41021	LILOCN
Lot	F4108	IOLOTN
Quantity	F41021	LIPQOH

### ⇧ Function Keys

Key	Function
F1	Search Data for Current Field
F2	Refresh the Current Screen Display
F3	
F4	Exits Transaction

## EnterpriseOne Programs - Reference

Application Name(s)	Code	Table
Item Detail Availability	P41021	F41021

## EnterpriseOne Item Detail Availability: P41021

Select    Find    Close    Seg...    New...    Dis...    Abo...   Links   Item ...   OLE ...   Internet

**Item Availability**   Additional Selections 1   Additional Selections 2

Branch/Plant:

U/M:

Secondary U/M:

Item Number:    Touring Bike, Red

Display Options:
   
 Summary Only
   
 Omit Zero Quantities

	P	S	Location	Branch/ Plant	On Hand	Secondary On Hand	Secondary Committed	Availabl
	P		.	30				
	S		1.A.	30	6			
	S		1.A.1	30	128			
	S		1.B.1	30	60			
	S		1.B.2	30	90			

## Test Script Description: IM Location by Item Inquiry

### RFGGen Input Requirements

Before you begin testing, ensure, for the combination of branch/plant(s) and item(s) you will be testing, that the following is setup in EnterpriseOne or PeopleSoft World.

- a. Plant
- b. Item Number

### JD Edwards Processing Option Settings

Enter the Processing Option values, which correspond, to the version you selected for testing.

JDE Version: ZJDE0001\_\_\_\_\_

Tab	Processing Option Description	Value

### Execution Procedures

ID	Test Case	Expected Result	Pass	Fail
1	Type in a valid Plant _____ Press the <b>ENTER</b> key	RFGEN will validate and accept the plant entered		
2	Type in a valid Item# _____ Press the <b>ENTER</b> key	RFGEN will validate and accept the item number entered, and return a list box containing inventory locations by item with the current quantity on hand. If the item is lotted, the inquiry will also display lot numbers.		
3	Type in an invalid Plant _____ Press the <b>ENTER</b> key	RFGEN will validate and display an error message – the field will continue to error out until corrected		
4	Type in an invalid Item# _____ Press the <b>ENTER</b> key	RFGEN will validate and display an error message – the field will continue to error out until corrected		
5	Press the “F1” key with the cursor in the Plant field	RFGEN will display a list of branch/plants		
6	Press the “F1” key with the cursor in the Plant field to select and return a Plant	RFGEN will display a list of branch/plants and when selected, the Plant will be returned		
7	Press the “F1” key with the cursor in the Item# field	RFGEN will display a list of item numbers		

8	Press the "F1" key with the cursor in the LP# field to select and return an LP#	RFGEN will display a list of item numbers and when selected, the Item# will be returned		
9	If the show all 'B/P' box is checked	RFGEN will display inventory locations by item with the current quantity on hand for branch/plants		
10	If the show all 'Lot' box is checked	RFGEN will display inventory locations by item with the current quantity on hand for all lots		
11	If the show all 'Dt' box is checked	RFGEN will display inventory locations by item with the current quantity on hand for all lots and the lot detail		
12	If the show all 'Avail' box is checked	RFGEN will display inventory locations by item where the quantities will adjust to show all on hand with the exception of those items that are soft or hard committed		
13	After reviewing the Location by Item Inquiry display	Confirm the Location by Item Inquiry results		

## Overall Test Case Results

<b>Pass/Fail:</b>	
<b>Tester/Date:</b>	
<b>Re-Tester/Date:</b>	

<b>Actual Results:</b>	
------------------------	--

<b>Comments:</b>	
------------------	--